

# **FT-65R/E FT-25R/E**

## **Memory Programmer**

### **Instruction Manual**

The Memory Programmer software provides convenient editing of the FT-65R/E and FT-25R/E memory channel frequencies, channel information and alpha tags, using a personal computer. Also, the transceiver parameters and the set (menu) mode items may be edited and configured easily from the computer keyboard.

# Table of Contents

<b>Introduction.....</b>	<b>2</b>	<b>Switching buttons .....</b>	<b>17</b>
About this manual.....	2	① Normal.....	17
Important Notes.....	2	② PMS.....	17
System Requirements .....	2	③ VFO-A.....	17
Supported Operating Systems .....	2	④ VFO-B .....	17
CPU.....	2	⑤ Home.....	17
RAM (system memory).....	3	⑥ P .....	17
HDD (Hard Disk) .....	3	<b>Set Value Input screen .....</b>	<b>18</b>
Necessary PC peripheral interfaces.....	3	① RX Frequency .....	18
Required Cable .....	3	② Offset Frequency.....	18
Trademarks .....	3	③ Auto Offset.....	18
The flow sequence of the Memory Programmer .....	3	④ Offset Direction.....	18
<b>Set up the Memory Programmer.....</b>	<b>4</b>	⑤ CTCSS Decode.....	18
Installing the SCU-35 driver software .....	4	⑥ CTCSS Encode.....	18
Preparation.....	4	⑦ DCS Decode .....	18
SCU-35 Driver Software Installation.....	4	⑧ DCS Encode.....	18
When the Driver Software Installation Fails .....	5	⑨ Channel Name .....	18
How to Uninstall the Programming Cable Driver..	6	⑩ TX Power.....	18
Installing the Memory Programmer .....	7	⑪ Scan .....	19
Preparation.....	7	⑫ Wide Narrow.....	19
How to Uninstall the Memory Programmer .....	8	⑬ Step.....	19
<b>Basic Operation .....</b>	<b>9</b>	⑭ SQL Type.....	19
Activating the Memory Programmer.....	9	⑮ Bank .....	19
Connecting the FT-65R/E or FT-25R/E to the com- puter .....	9	<b>Troubleshooting .....</b>	<b>20</b>
Set the Comm Port Number of the SCU-35 driver .... .....	10	FT-65/25 cannot receive or transmit data to the computer. The Data transfer does not start. ....	20
Read the settings from the transceiver.....	10	The data transmission has stopped before com- pletion.....	20
Edit the transceiver settings with the Memory Pro- grammer .....	11		
Write the settings to the transceiver .....	11		
<b>About Memory Programmer.....</b>	<b>12</b>		
Initial screen .....	12		
<b>Menu Bar .....</b>	<b>13</b>		
File menu.....	13		
① New .....	13		
② Open.....	13		
③ Save .....	13		
④ Save as .....	13		
⑤ Exit .....	13		
Edit menu .....	14		
① CH. Edit.....	14		
② Function Setup .....	14		
③ Bank Channel.....	14		
Set menu .....	15		
① Set COM.....	15		
② Set Initialization .....	15		
Program menu.....	15		
① Read From Radio .....	15		
② Write To Radio.....	15		
View menu.....	16		
① Tool Bar .....	16		
② Status Bar.....	16		
Version menu .....	16		
① About FT_65(25)_XXX .....	16		




## Introduction

The Memory Programmer software uses a Personal Computer to quickly enter and save the FT-65R/E and FT-25R/E memory channel frequencies and data. Also, the many Set Mode (Menu) settings may be adapted for individual operating preferences. All of the information is saved. The setting data can be imported from an FT-65R/E or FT-25R/E, and the edited setting data can be transferred to a FT-65R/E or FT-25R/E .

- ☐ Edit the RX frequencies, memory names, CTCSS/DCS settings, transmit power, etc. that is related to the memory channels.
- ☐ Edit the Memory bank link setting.
- ☐ Configure the various Set (Menu) Mode options on the computer monitor screen.
- ☐ Use handy editing functions, such as copy and paste for each line of memory channel number.

## About this manual

- ☐ This manual contains symbols and conventions to call attention to important information.

Symbols	Description
	This icon indicates cautions and alerts the user should be aware of.
	This icon indicates helpful notes, tips and information.
	This icon indicates other pages containing relevant information.

- ☐ The procedures on this manual is explained for a Windows 7® (64 bit) computer for the purpose of illustration.

## Important Notes

- ☐ Before downloading this software, please read the “Important Notes” carefully.

- Copyrights and all other intellectual property rights for the software, as well as the software manual, are the property of YAESU MUSEN CO., LTD.
- The revision, modification, reverse engineering, and decompiling of this software is prohibited. Redistribution, transfer, and resale of downloaded files are also prohibited.
- Do not resell the software or manuals.
- All responsibility for the use of this software lies with the customer. Yaesu cannot be held responsible in any way for any damages or losses, which may be incurred by the customer as a result of using this software.

- ☐ Read this manual thoroughly and install the software.

## System Requirements

### Supported Operating Systems

Microsoft® Windows® 10 (32 bit/64 bit)  
Microsoft® Windows® 8.1 (32 bit/64 bit)  
Microsoft® Windows® 7 (32 bit/64 bit)

### CPU

The performance of the CPU must be able to satisfy the operating system requirements.

## RAM (system memory)

---

The capacity of the RAM (system memory) must be more than sufficient to satisfy the operating system requirements.

## HDD (Hard Disk)

---

The capacity of the HDD must be more than sufficient to satisfy the operating system requirements.

In addition to the memory space required to run the operating system, about 50 MB or more of additional memory space is required to run the program.

## Necessary PC peripheral interfaces

---

USB port (USB 1.1 / USB 2.0)

## Required Cable

---

Programming Cable SCU-35



Before using the SCU-35 Programming Cable, install the designated driver on the computer.

## Trademarks

---

Microsoft®, Windows®, Windows® 7, Windows® 8.1. and Windows® 10, are registered trademarks in the United States and other countries.

## The flow sequence of the Memory Programmer

---

The procedure when using Memory Programmer for the first time is as follows:

**Installing the SCU-35 driver software (Page 4)**



**Installing the Memory Programmer (Page 7)**



**Basic Operation (Page 9)**



**About Memory Programmer (Page 12)**

## Set up the Memory Programmer

### Installing the SCU-35 driver software

#### Preparation

- ☐ Download the SCU-35 driver software from the Yaesu Website (<http://www.yaesu.com/>).
- ☐ Extract the downloaded (PL2303\_Prolific\_DriverInstaller\_v\*\*\*\*.zip) file.
- ☐ Start up the computer as an “Administrator” user.



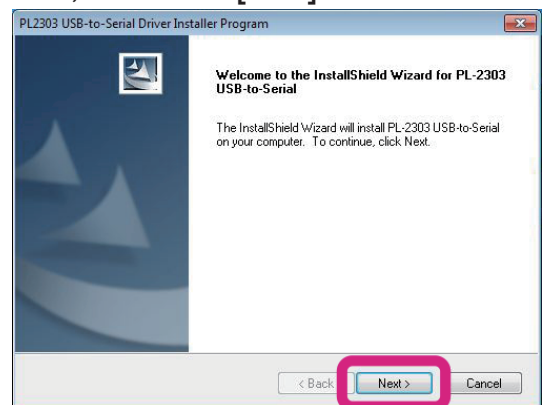
Before installing the driver, make sure that the SCU-35 Programming Cable is disconnected from the computer.

#### SCU-35 Driver Software Installation

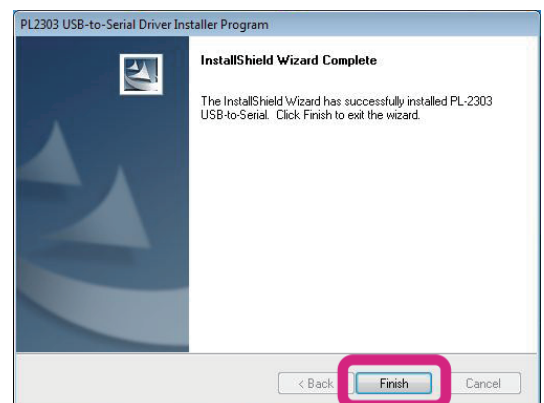
1. Double-click the “PL2303\_Prolific\_DriverInstaller\_v\*\*\*\*.exe” file, in the same unzip folder.

When the [User Account Control] dialog box opens, click the [Yes].

2. The dialog box, which is shown at the right, will open. Click the [Next], to initiate the installation of the driver.



3. When the installation is finished, the dialog box shown right will open. Click the [Finish], to complete the installation of the driver.



4. Connect the SCU-35 Programming Cable to the USB jack on the computer.
  - The SCU-35 Programming Cable will be recognized automatically.
  - Confirm that the SCU-35 driver is installed correctly, If the driver fails, proceed to “When the Driver Software Installation Fails” on the next page.
5. Click the [Start] button in the tool bar, then right-click the [Computer] button.
6. Click the [Properties], then click the [Device Manager] button.
7. When the [User Account Control] dialog box opens, click the [Yes] button.

## Set up the Memory Programmer

8. Open the [Device Manager] dialog box, then double-click the [Ports (COM&LPT)] button.
  - When the “Prolific USB-to-Serial Comm Port (COM X)” (X: Comm Port Number) is displayed, the SCU-35 Programming Cable is functioning normally.
  - To connect the transceiver to the PC, keep the Comm Port Number in mind.

### When the Driver Software Installation Fails

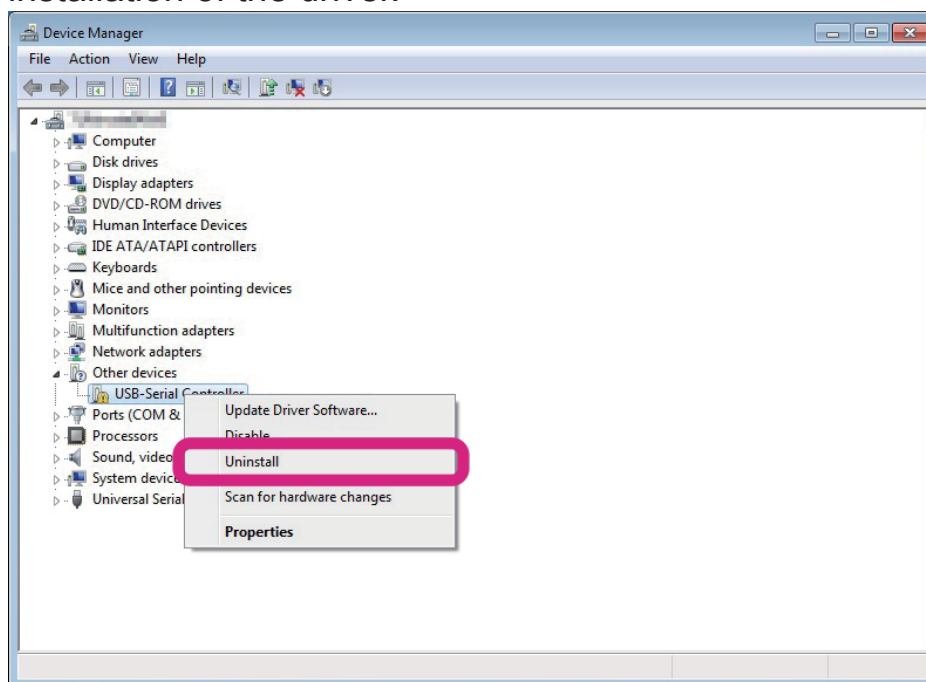
---

The driver installation may fail when:

- ☐ The installation wizard is canceled during the installation.
- ☐ The SCU-35 Programming Cable is connected to the computer before installing the driver.

When the installation of the driver fails:

1. Open the [Device Manager] dialog box, as described in step 6 of the “SCU-35 Driver Software Installation” instruction section
2. Right-Click [Other devices], which is appended to the “!” icon, then click [Uninstall], to uninstall the driver.
3. Retry the installation of the driver.

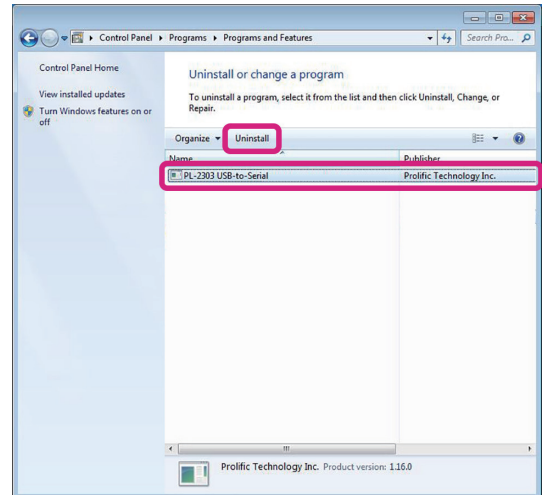


# Set up the Memory Programmer

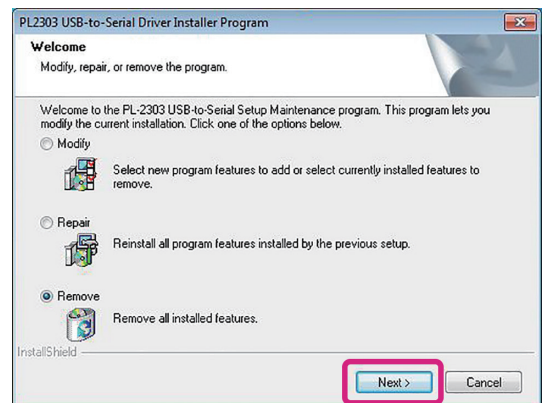
## How to Uninstall the Programming Cable Driver

If you wish to uninstall the SCU-35 Programming Cable driver, perform the following procedures:

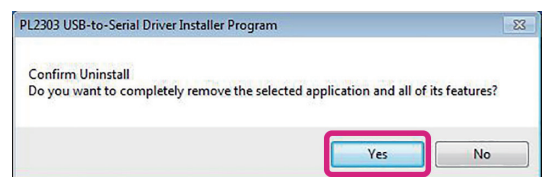
1. Disconnect the SCU-35 Programming Cable from the computer.
2. Click [Start] → [Control Panel] → [Uninstall a program].
3. Click “PL- 2303 USB-to-Serial”, then click [Uninstall].



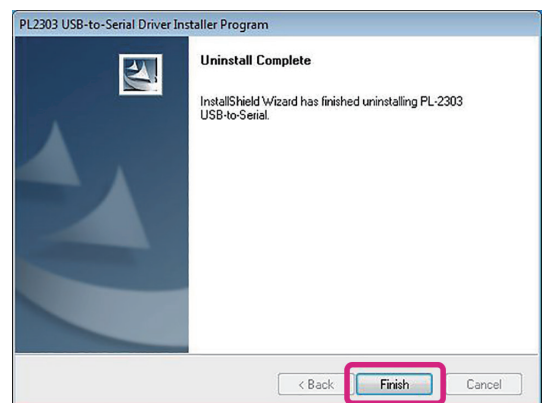
4. Click [Next].



5. Click [Yes] to uninstall the SCU-35 programming cable driver.



6. When uninstall is finished, the dialog box shown to the right will open. Click [Finish] to complete removal of the SCU-35 programming cable driver.





# Set up the Memory Programmer

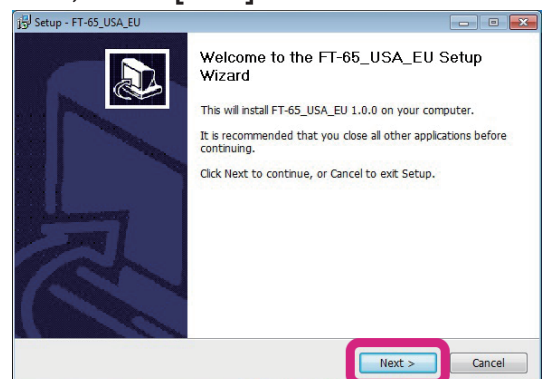
## Installing the Memory Programmer

### Preparation

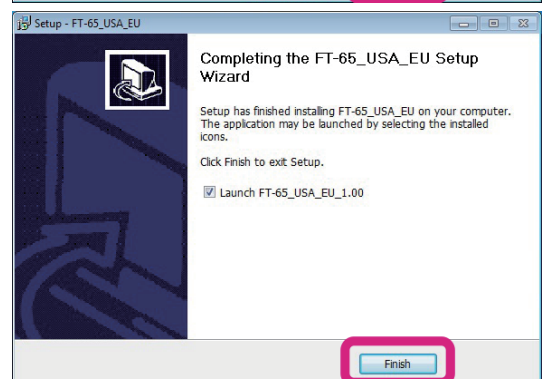
- ☐ Download the Memory Programmer from the Yaesu Website (<http://www.yaesu.com/>).
- ☐ Currently there are two different destination versions of the FT-65R/E or FT-25R/E transceivers: USA\_EU (DST: USA/EU), and EXP (DST: EXP/CHN).
- ☐ Download the zip file “FT-65(25)\_USA\_EU\_Setup” for USA/EU, or the zip file “FT-65(25)\_EXP\_Setup” for EXP” destination versions from the YAESU website files section.
- ☐ Extract the downloaded zip file.
- ☐ Start up the computer as an “Administrator” user.

For example: the procedure to install the FT-65 memory programmer (USA/EU version) on a Windows7® (64 bit) computer is shown below.

1. Double-click the “FT-65\_USA\_EU\_Setup.exe” file in the same unzip folder. When the [User Account Control] dialog box opens, click [Yes].
2. The dialog box shown to the right will open. Click [Next], to initiate the installation of the Memory Programmer.



3. When uninstall is finished, the dialog box shown to the right will open. Click [Finish] to complete the Memory Programmer procedure.





## Set up the Memory Programmer

### How to Uninstall the Memory Programmer

For example: the procedure to uninstall the FT-65 Memory Programmer (USA/EU version) on a Windows 7® (64 bit) computer is shown below.

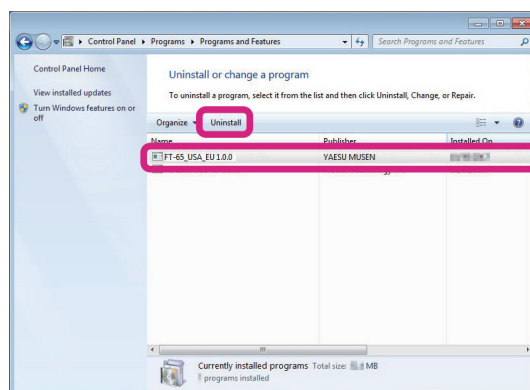
1. Disconnect the SCU-35 Programming Cable from the computer.
2. Click [Start] → [Control Panel] → [Uninstall a program].



When [Uninstall a program] is not displayed, click [Programs and Features].

3. Click on [FT-65\_USA\_EU \*.\*\*] and then click [Uninstall].

When the [User Account Control] dialog box opens, click [Yes].

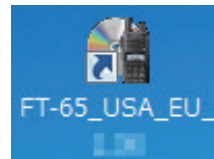


## Basic Operation

### Activating the Memory Programmer

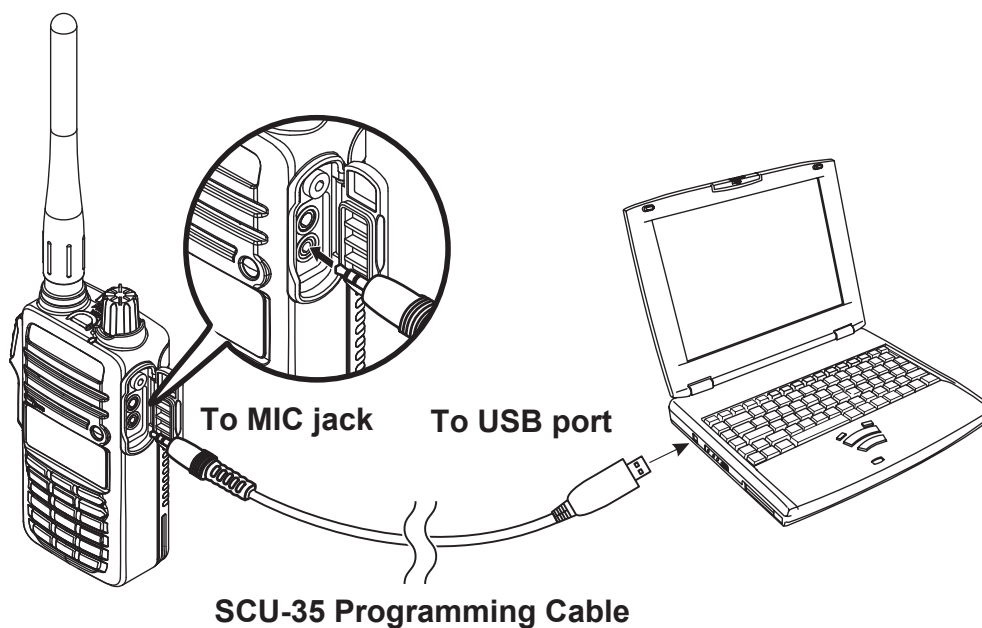
Double-click the desktop icon (shown at the right), to activate the Memory Programmer.

To exit the Memory Programmer, click on [Exit] in the [File] menu.



### Connecting the FT-65R/E or FT-25R/E to the computer

1. Turn the transceiver **OFF**.
2. Connect the SCU-35 Programming Cable to the USB port on the computer and connect the plug to the transceiver MIC jack.



Do not disconnect the SCU-35 Programming Cable while transferring the data.

3. Turn the transceiver **ON**.


## Basic Operation

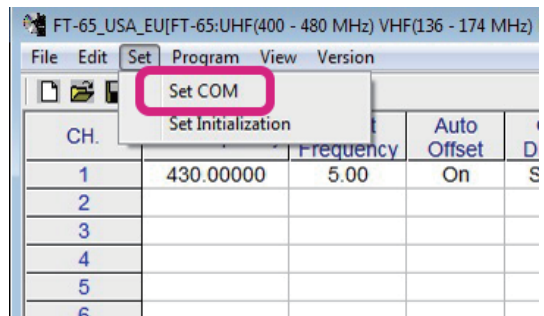
### Set the Comm Port Number of the SCU-35 driver

1. Click the [Set COM] parameter in the [Set] menu.

The “Communication Setting” window will open.

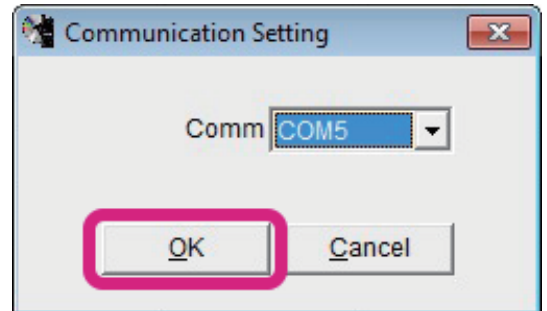


The [Set COM] parameter may also be set by clicking the  logo.



2. Select the Comm Port Number, then click [OK].

The Comm Port Number of the SCU-35 driver will be shown in step 8 of the “SCU-35 Driver Software Installation” procedure.




### Read the settings from the transceiver

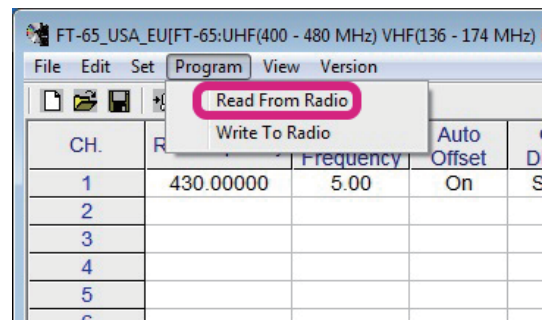


To write the settings to the transceiver, see “Write the settings to the transceiver” on page 11.

1. Click the [Read From Radio] parameter in the [Program] menu.

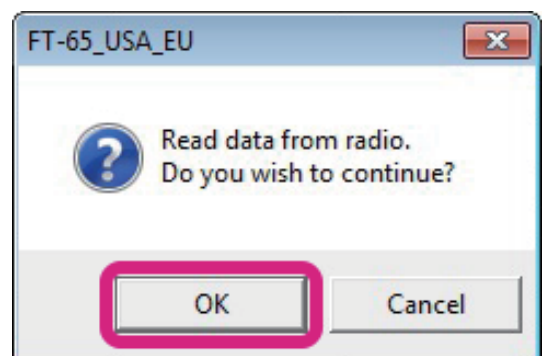


The [Read From Radio] parameter may also be set by clicking the  logo.

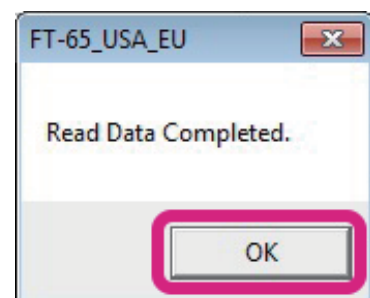


2. The confirmation popup window will open, then click [OK].

The completion percentage popup window will appear.



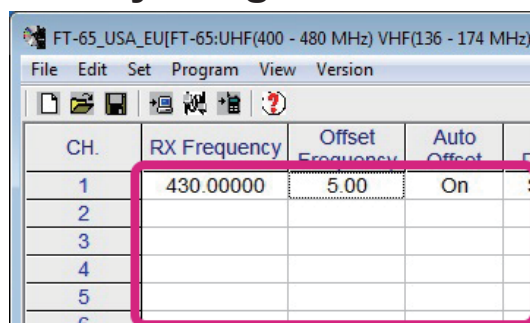
3. If reading is successful, the popup window will open, then click [OK].



## Basic Operation

### Edit the transceiver settings with the Memory Programmer

1. Double-click the cells of each channel to enter the data.
2. Input the alphanumeric characters, or select the settings from the dropdown list of each channel.  
The data may be copied and pasted to the desired channels.



The rows of each channel may be Cut, Copied or Pasted (Ctrl+X, Ctrl+c or Ctrl+V), However some of the cells on each channel row may not be Cut, Copied or Pasted (Ctrl+X, Ctrl+C or Ctrl+V).



For more details on the contents of each setting, see page 12.

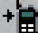
### Write the settings to the transceiver

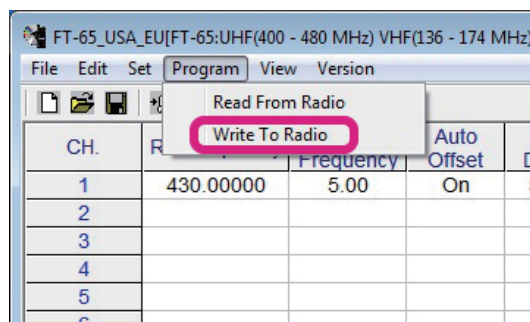


Memory programmer data may only be written to the same model transceiver.

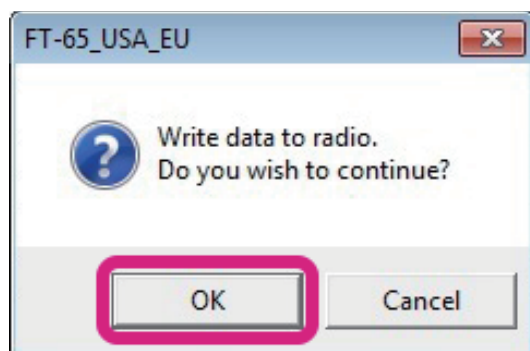
1. Click the [Write To Radio] parameter in the [Program] menu.



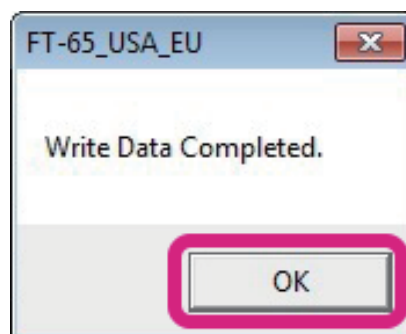
The [Write To Radio] parameter may also be set by clicking the  logo.



2. The Confirmation popup window will open, then click [OK].  
The Completion percentage popup window will appear.



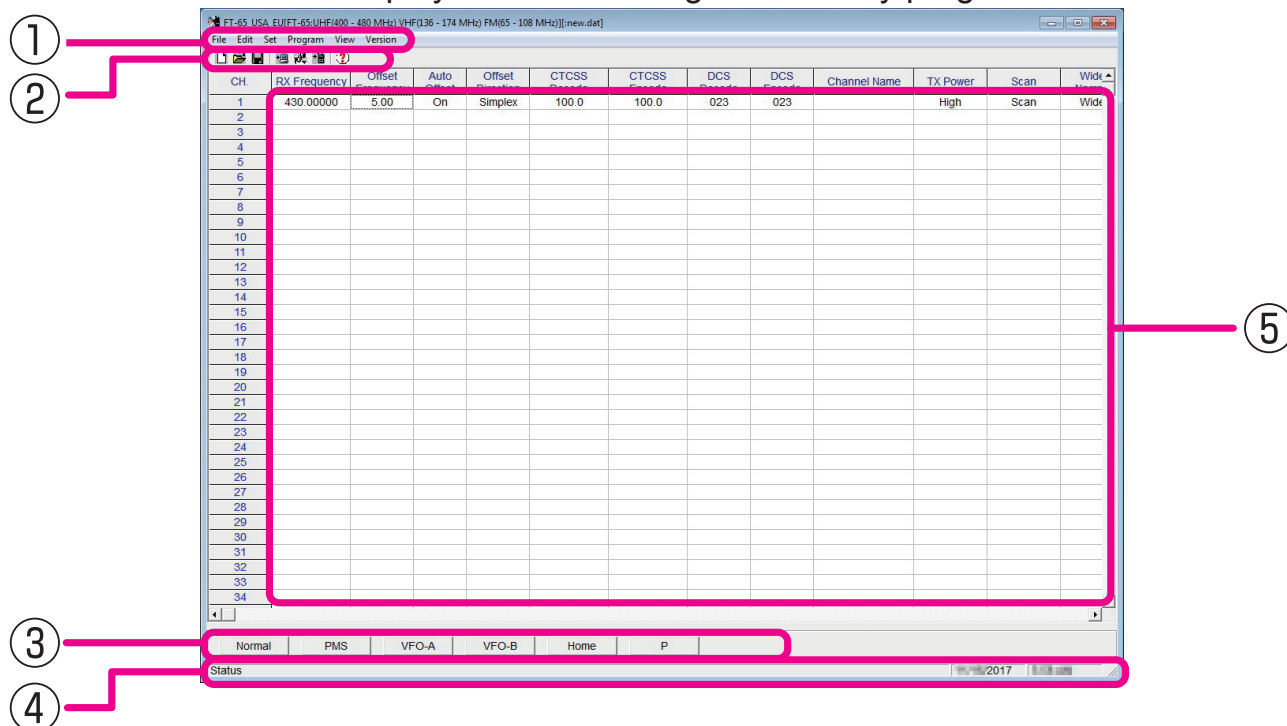
3. If the writing is successful, a popup window will open, then click [OK].



# About Memory Programmer

## Initial screen

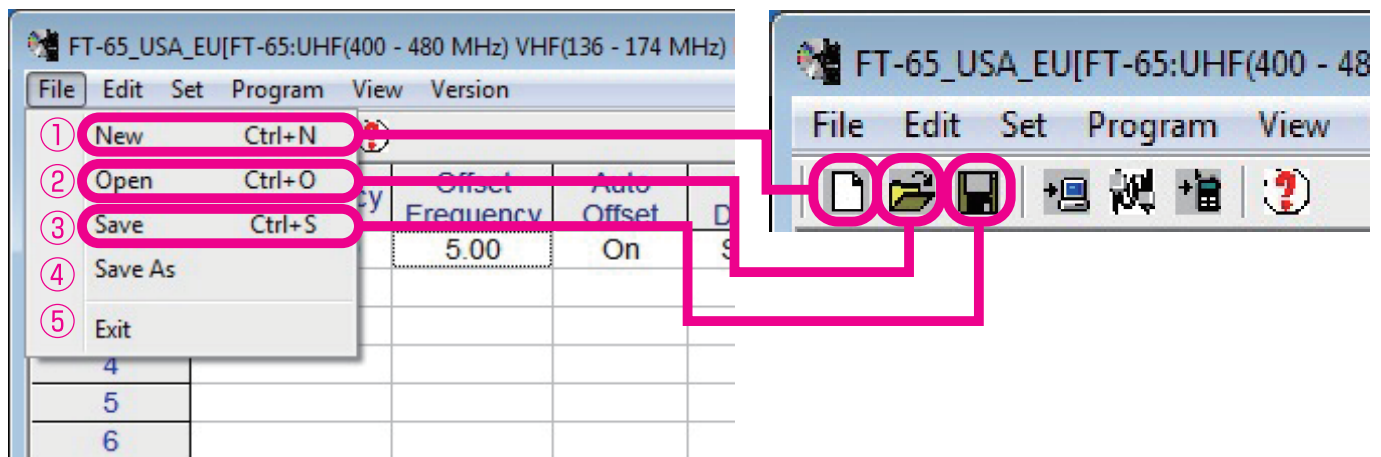
This is the initial screen displayed when starting the memory programmer.



	Name	Description	
①	<b>Menu Bar</b>	Click the menu bar to read from the radio, write to radio, set language, set initialization, etc.	13
②	<b>Tool Bar</b>	Click the [Tool bar] parameter in the [View] menu to display or hide the Tool bar. The Tool bar includes buttons for some of the most common commands in the Memory Programmer.	16
③	<b>Switching Button</b>	Click each button (PMS, VFO-A, etc) to switch the display settings.	17
④	<b>Status Bar</b>	Click the [Status Bar] parameter in the [View] menu to display or hide the Status Bar. The Status Bar displays the date and the time.	16
⑤	<b>Set Value Input Screen</b>	Double-click each channel setting to input the setting values.	18

## Menu Bar

### File menu



#### ① New

Open a new configuration file from the disk drive.

Click the [New] parameter in the [File] menu to open the Memory Programmer default configuration file.

The default settings are set in the default configuration file.

This [New] menu screen operates the same, either by using the dropdown lists, or by clicking on the icons, as shown in the figures above.

#### ② Open

Open a previously-saved configuration file from the disk.

Click the [Open] parameter in the [File] menu, a pop-up window appears which shows all the saved files in the specified path.

This [Open] button operates the same as the right icon in the figures above.

#### ③ Save

Save the programming session to the disk with the same name and directory.

Click the [Save] parameter in the [File] menu, a caution message will appear. If you agree to over-write the current file, click [OK].

This [Save] button operates the same as the right icon in the figure above.

#### ④ Save as

Save the programming session to the disk with a new name.

Click the [Save As] parameter in the [File] menu, a pop-up window will appear which displays all the current files saved to the specified path.

To save the programming session with a new name, type the new file name in the bottom box, then click [OK].

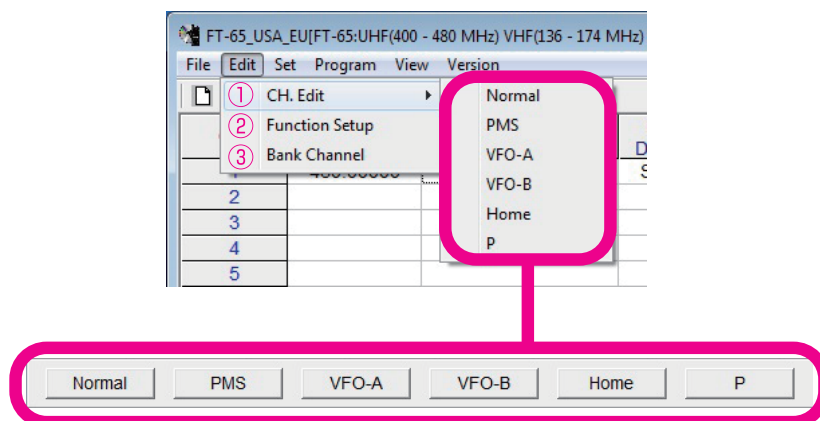
#### ⑤ Exit

Exit the program and close the window.



## Menu Bar

### Edit menu



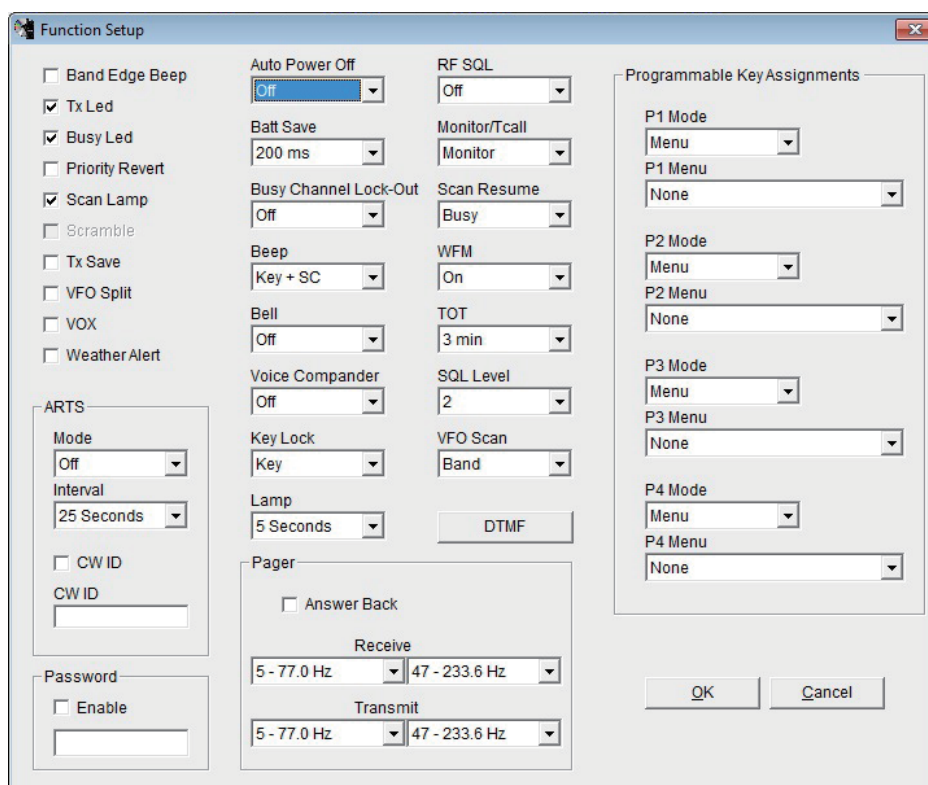
#### ①CH. Edit

Click [CH Edit], to display the set value input selection list. This list operates the same as the switching buttons. For details, see “Switching buttons” on page 17.

#### ②Function Setup

Use this function to customize the various functions of the FT-65/25 according to your preferences.

Click the [Function Setup] parameter in the [Edit] menu to open the “Function Setup” window.



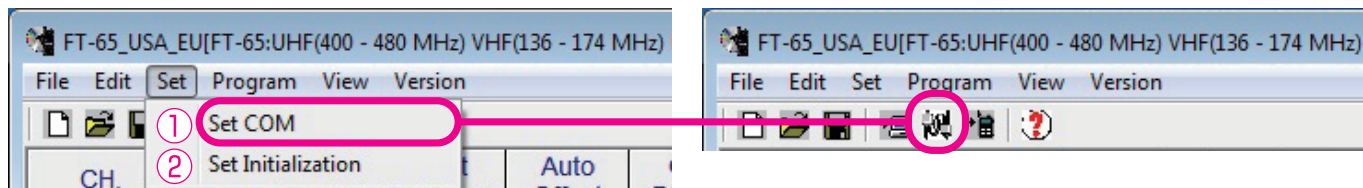
#### ③Bank Channel

A combination of up to 100 memory channels, and preset memory channels can be registered to each BANK (BANK 1 to BANK 10). When selecting a bank, only channels registered to the bank will be recalled.



## Menu Bar

### Set menu



#### ① Set COM

Set the Comm Port number of the SCU-35 driver.

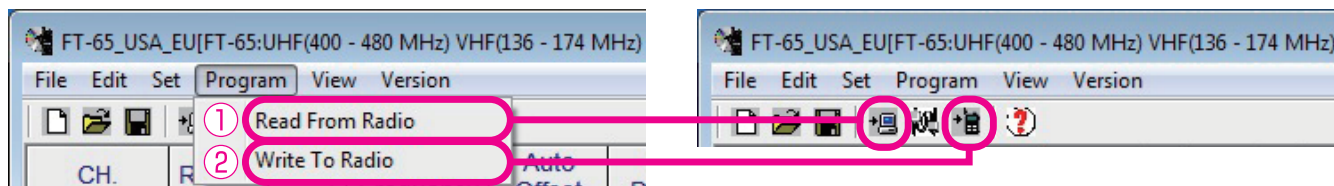
This [Set COM] selection operates the same as clicking the icon in the figure at the above right.

#### ② Set Initialization

Initialize the configuration content of the Memory Programmer.

If the present configuration has not been saved to the disk, you will be prompted to confirm whether or not you wish to save the new data.

### Program menu



#### ① Read From Radio

This command transfers the settings data of the FT-65/25 to the memory programmer. This [Read From Radio] operates the same as the right icon in the figure above.



Read data may be stored to the computer files, using the [Save] or [Save as] commands in the [File] menu.



For details, see “Read the settings from the transceiver”.

#### ② Write To Radio

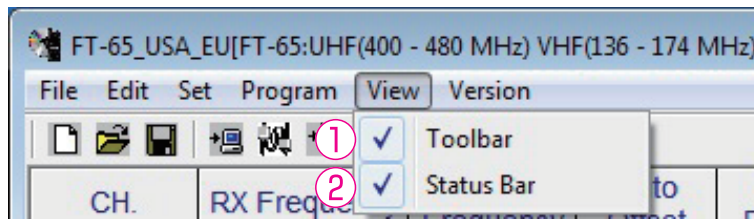
This command downloads the Memory Programmer data from the computer to the FT-65/25. This [Write To Radio] selection operates the same as the right icon in the figure above.



For details, see “Write the settings to the transceiver”.

## Menu Bar

### View menu



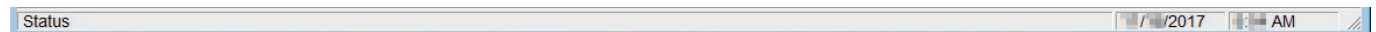
#### ① Tool Bar

Click the [Toolbar] parameter in the [View] menu to display or hide the Tool bar. The tool bar includes buttons for some of the most often used commands in the Memory programmer. A check mark appears next to the [Toolbar] parameter when the Tool bar is displayed.

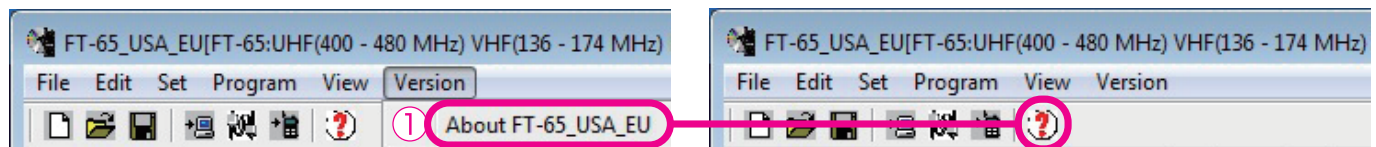


#### ② Status Bar

Click the [Status Bar] parameter in the [View] menu to display or hide the Status Bar. The [Status Bar] displays the date and the time. A check mark appears next to the [Status Bar] parameter when the Status Bar is displayed.



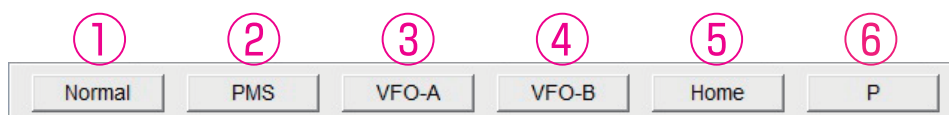
### Version menu



#### ① About FT\_65(25)\_XXX

Click the [About FT-65(25)\_XXX(destination version)] parameter in the [Version] menu, to display the version and copyright of the Memory Programmer. This menu operates the same as the icon in the figure at the right above.

## Switching buttons



---

### ① Normal

Click the [Normal] button to change the normal operation settings.

---

### ② PMS

Click the [PMS] button to change the PMS memory channel settings.

---

### ③ VFO-A

Click the [VFO-A] button to change the default settings of VFO-A.

---

### ④ VFO-B

Click the [VFO-B] button to change the default settings of VFO-B.

---

### ⑤ Home

Click the [Home] button to change the default settings of the Home channel.

---

### ⑥ P

Click the [P] button to change the default settings of the [P1]-[P4] keys of the transceiver.

## Set Value Input screen

FT-65\_USA\_EU[FT-65:UHF(400 - 480 MHz) VHF(136 - 174 MHz) FM(65 - 108 MHz)][:new.dat]

File Edit Set Program View Version

<

### ①RX Frequency

Enter the RX.

Enter the desired receive frequency.

### ②Offset Frequency

This item sets the offset frequency for the repeater.

### ③Auto Offset

This item sets the auto offset frequency ON or OFF for the repeater.

### ④Offset Direction

This item selects the offset direction for the repeater.

- Plus  
The transmit frequency is shifted to the plus offset.
- Minus  
The transmit frequency is shifted to the minus offset.
- Simplex  
The transmit frequency is not shifted.

### ⑤CTCSS Decode

To set the receive CTCSS tone frequency.

### ⑥CTCSS Encode

To set the transmit CTCSS tone frequency.

### ⑦DCS Decode

To set the receive DCS code.

### ⑧DCS Encode

To set the transmit DCS code.

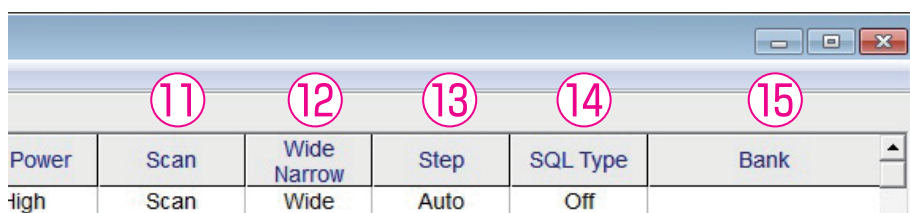
### ⑨Channel Name

Enter the desired memory name (up to 8 digits).

### ⑩TX Power

This item selects the TX Power.

## Setting the Items



### ⑪ Scan

Select the scanning condition for receiving channels.

- Scan  
Performs scanning according to the set mode basic setting - SCAN RESUME.
- Skip  
Skips the designated memory channels during scanning.

### ⑫ Wide Narrow

This item selects wide/narrow bandwidth on the FM mode.

- Wide  
Use for FM broadcasting.
- Narrow  
Use for narrow bandwidth ham radio and advisory radio.

### ⑬ Step

Sets the channel step for receiving channels. Normally, when a frequency is entered, the optimal channel step will be automatically set according to the frequency.

### ⑭ SQL Type

This item selects the Tone Encoder and/or Decoder mode.

### ⑮ Bank

A combination of up to 200 memory channels and PMS channels can be registered to each BANK, of BANK 1 to BANK 10. In the column of each channel, check the box of the BANK to register the desired channel.

When selecting a bank, only channels registered to the bank will be recalled.

## Troubleshooting

### **FT-65/25 cannot receive or transmit data to the computer. The Data transfer does not start.**

- Verify that the programming cable is correctly connected to the FT-65/25 data port and to the Computer.
- The battery of the FT-65/25 may be depleted.  
Charge the battery or replace the battery with the new one.
- Is the computer COM Port setting correct?  
Set the COM Port correctly.

### **The data transmission has stopped before completion.**

- Disconnected Programming cable or poor contact of the Programming cable.  
Confirm the cable connection and try again.
- The battery of the FT-65/25 may be depleted.  
Charge the battery or replace the battery with the new one.



Copyright 2017  
YAESU MUSEN CO., LTD.  
All rights reserved.

No portion of this manual may be  
reproduced without the permission of  
YAESU MUSEN CO., LTD.

**YAESU MUSEN CO., LTD.**

Tennozu Parkside Building  
2-5-8 Higashi-Shinagawa, Shinagawa-ku, Tokyo 140-0002 Japan

**YAESU USA**

6125 Phyllis Drive, Cypress, CA 90630, U.S.A.

**YAESU UK**

Unit 12, Sun Valley Business Park, Winnall Close  
Winchester, Hampshire, SO23 0LB, U.K.